

What is Macromedia Dreamweaver?

Macromedia's Dreamweaver 4 is a powerful Web site development software program used by professionals, as well as beginners.

The program makes it easy for designers to create visually attractive, interactive Web pages without having to know HTML or JavaScript. However, Dreamweaver 4 also enables the experienced professional to edit HTML using the new code editor.

If your department doesn't already own a copy of Dreamweaver, you may talk to your IT Department about downloading a free 30 day trial from the Macromedia website at <http://www.macromedia.com>

The Interface

The Toolbar



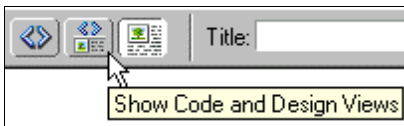
The toolbar is located at the top of the page in Dreamweaver.



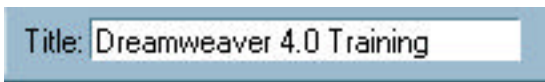
The **Show Code View** displays the current page in HTML code.



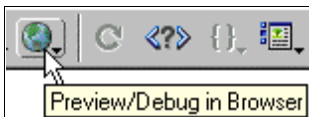
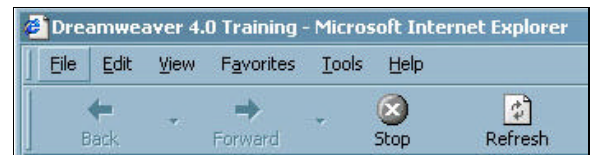
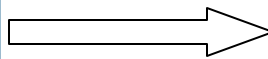
The **Show Design View** displays the current page in design layout.



The **Show Code and Design Views** option splits the document window, and displays the current page in both the HTML Code view and the Design layout view.

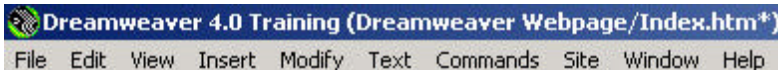


The **Title** text box enables you to type the name of the document or Web page. This information will appear in the title bar of the browser.



Click on the **Preview/Debug in Browser** button, a drop-down menu appears displaying the various browsers assigned. Select the browser that you would like to preview your page in. It is important that you preview your page in Netscape and in Internet Explorer, because it is possible to see different results. After you are done previewing your page, it is important that you close the browser in order for Dreamweaver to allow you to preview your page later on.

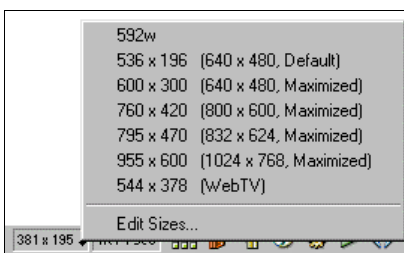
Saving Documents



Make sure to save your document frequently. Notice the asterisk next to the file name which indicates that you have made a change to the page without saving.

The Status Bar

The Status bar is located at the bottom right corner of the screen.



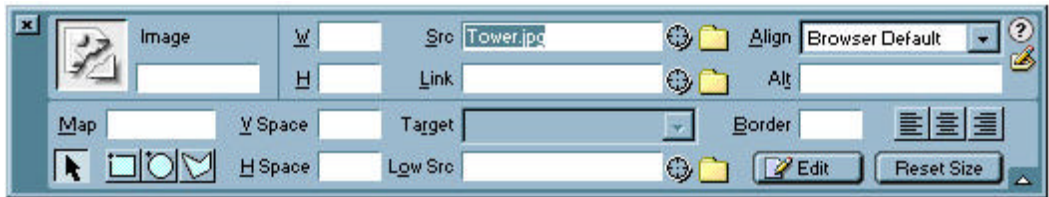
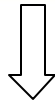
The pop-up menu of the **Window Size** displays a variety of monitor screen dimensions. This enables you to see how your page would be viewed on different monitors.

This indicator will update instantly when you change the size of your page:

The Properties Inspector

The Properties Inspector enables you to specify exactly what attributes you want for a particular object or line of text. These attributes could be a font name, hyperlink, image size, or text box value.

The properties inspector can also be expanded for more options by clicking the arrow on the bottom right.

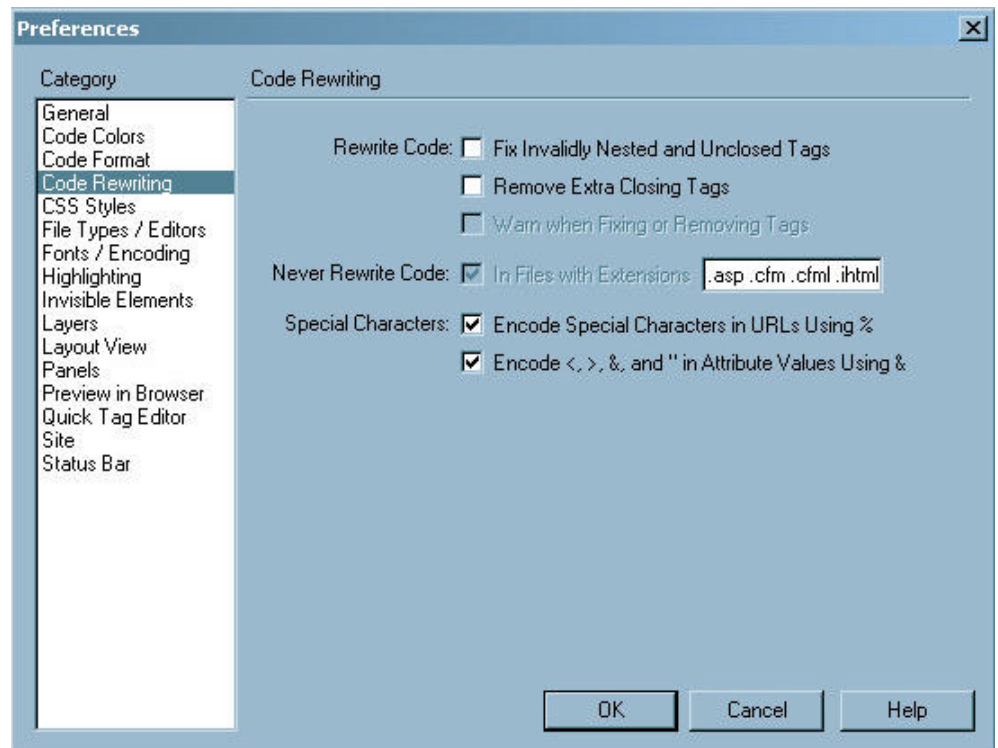


Preferences: Code Rewriting (TURN IT OFF)

It is important to turn off the code rewriting preference, because this can lead to potential problems with Dreamweaver automatically fixing your file.

Go to edit, and then to preferences, and select code rewriting on the left.

It is important that the first two boxes are **NOT** checked.



Define Site

Before you begin building your website, it is important that you define the website within Dreamweaver.

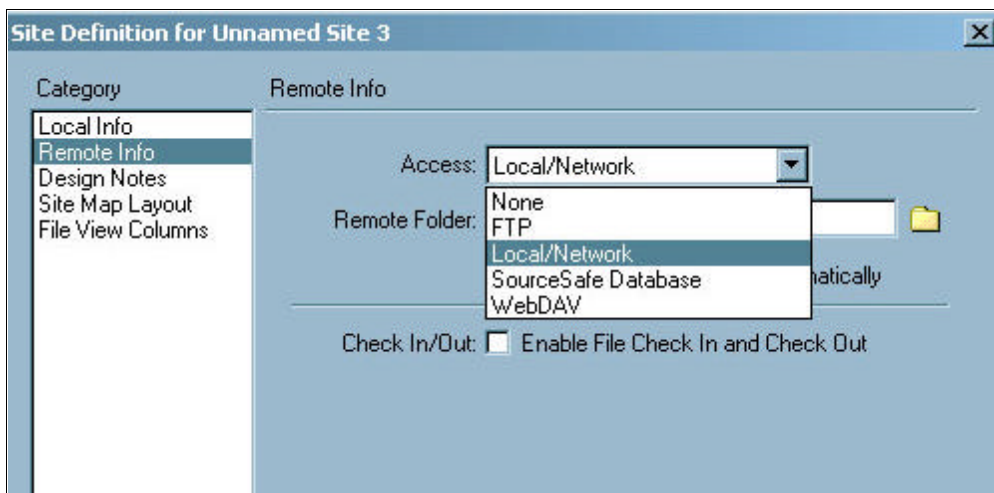
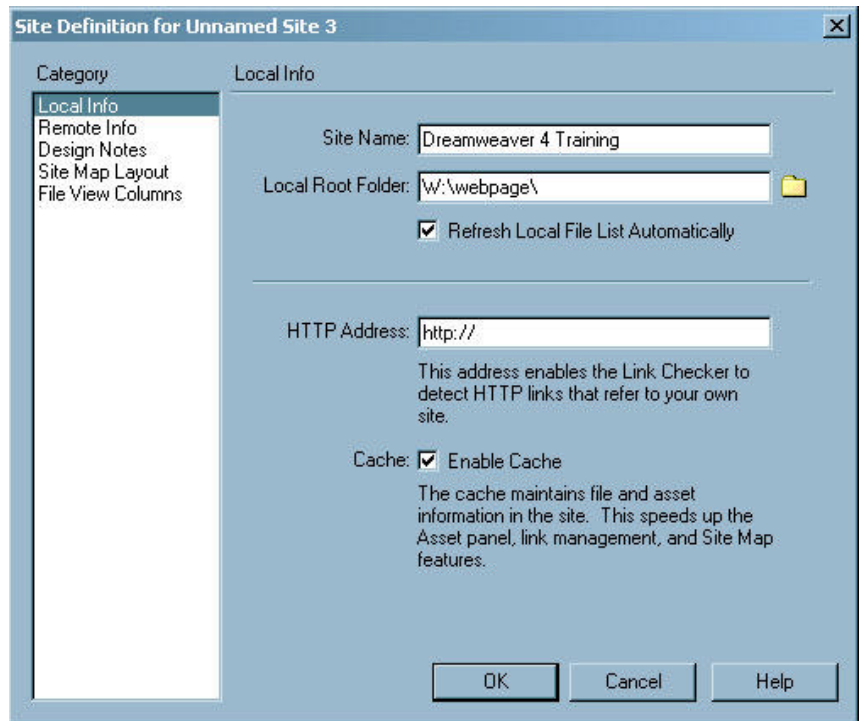
From the main menu, choose **Site > New Site**.

This will open the **Site Definition** dialog box.

Enter the Site name.

The local root folder is the folder where you webpage is located on your computer. Click the folder on the right of the textbox in order to browse for the local root folder. Enter address of the website if known, but if not, don't worry about it right now.

Next, set up the remote information. On the left, click "Remote Info"



Select the type of access that you are given through your department, most likely Local/Network.

Then select the web folder. Then Click ok.

File Structure

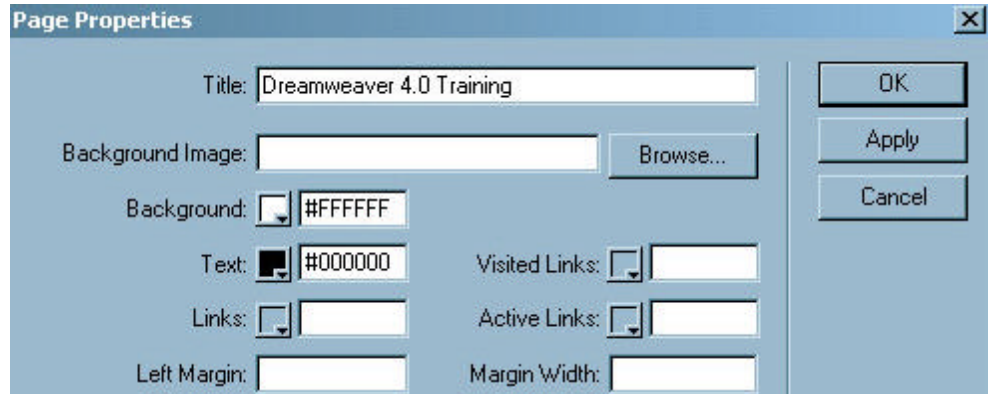
It is important that all of your files associated with your webpage are located within the same folder. For example, it is useful to have a folder on your desktop called "Webpage." When you insert images into your webpage, it is very important that the images are inside this webpage folder and not somewhere else on your hard drive. A good way of organizing images and webpage files, is to make a separate folder within the webpage folder called "images" and save only your images in that folder.

Modify Page Properties

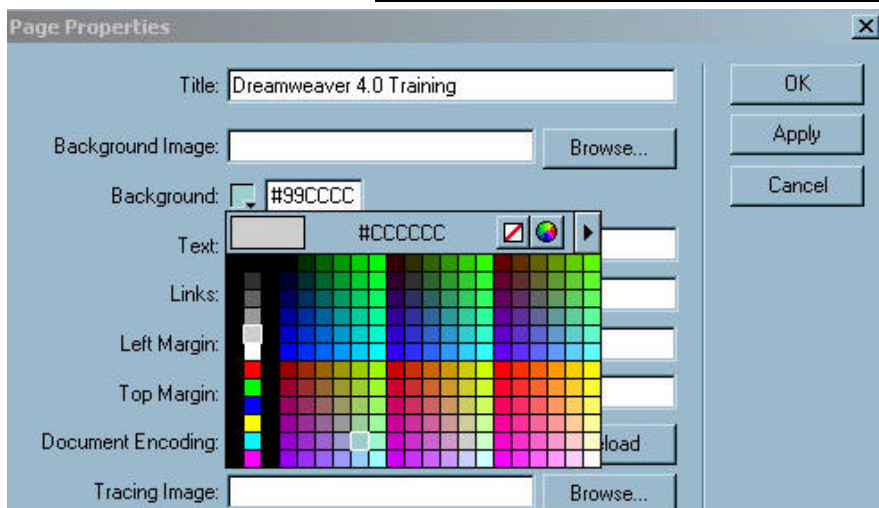
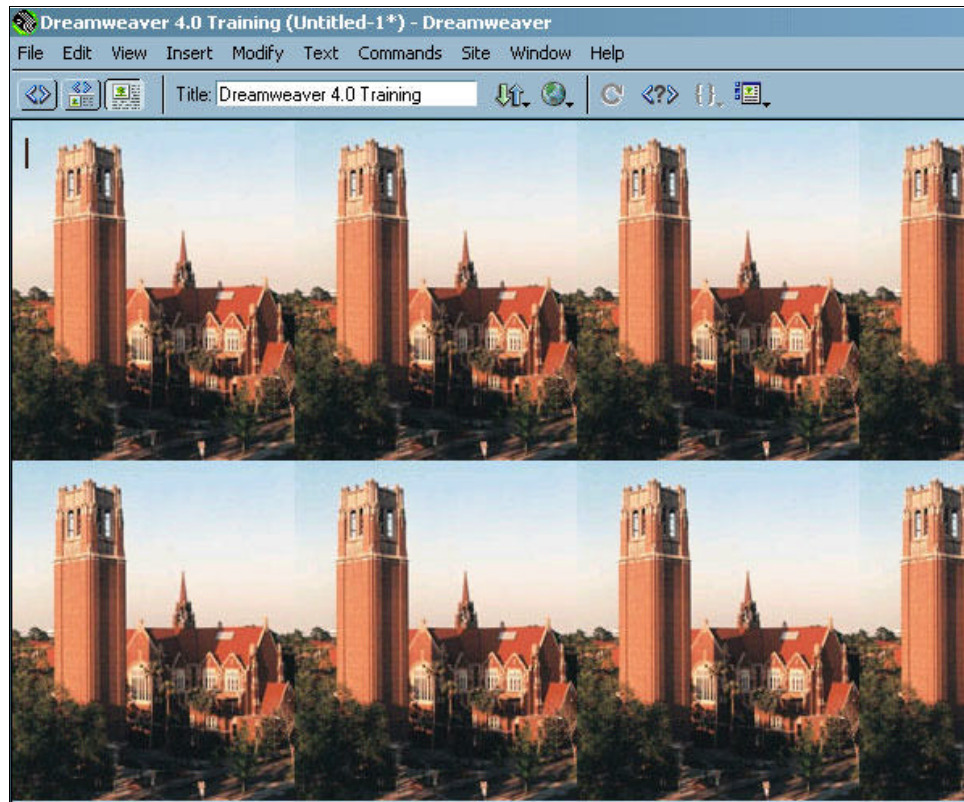
From the main menu, choose **Modify > Page Properties** and the Page Properties dialog box will be displayed.

Title: This is the same as the title function on the toolbar. What you type in this field will end up at the top of the web browser.

Background Image: If you click browse, and select an image, that image will become your webpage background, but it will be tiled. So, if the image is small, it will appear multiple times throughout the page.



Example: If you pick the following image as your background image, this is what will happen.



Background Color: This feature is used if you wish to choose a background color for your webpage. Click the little box next to the word background in order to see an array of colors. Select a color and then click ok.

You can also change the color of links by completing the same process.

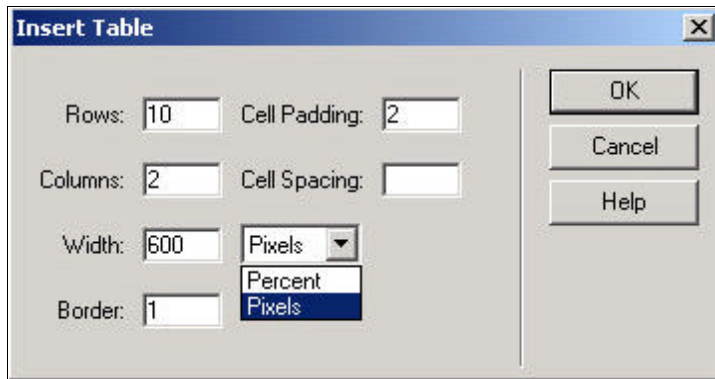
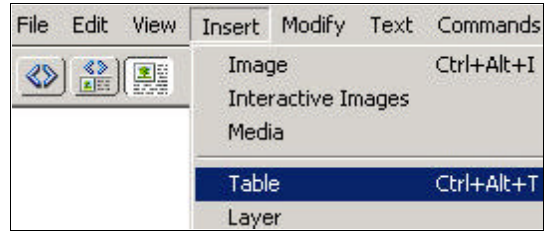
Building a Webpage

Working with Tables

Tables are very important in web design. Many webpages would not be able to look the way they do without tables. Tables serve mainly to keep information organized, and to keep the formatting clean. Certain things can be done without tables, such as images next to text, but you run the risk of strange things happening, such as the text appearing on top of the image on certain computers, depending on the settings.

First, insert the table, by going to insert, and then table.

Insert the amount of rows and columns that you would like. For now, you change the width setting to pixels and type in 600. You can leave the border at 1 for now.



Cell Padding

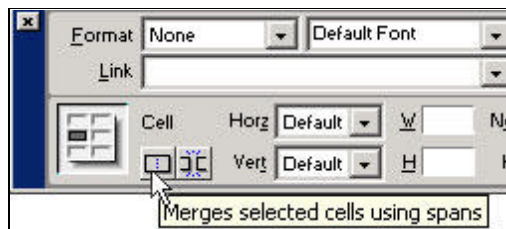
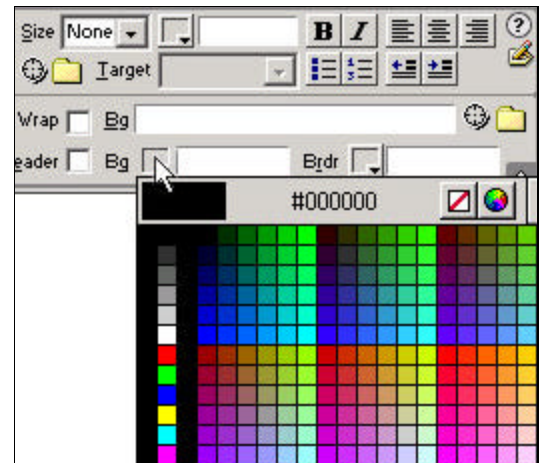
The cell padding is the margins between the text or image in the cell and the edge of the cell.

Cell Spacing

The cell spacing is the spacing in between cells in a table.

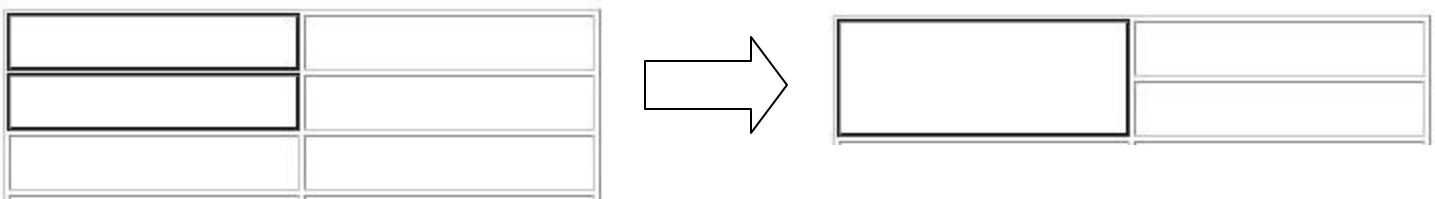
Cell Background Color

If you would like to change the background color of a single cell, click in that cell and then move to the properties inspector, and click bg color and select a color.



Merging Cells

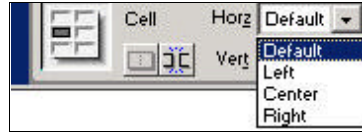
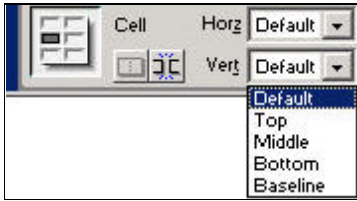
If you would like to merge two cells, select the two cells and then click the merge function on the property inspector. Once the two cells are merged, you will get the following result.



Adjusting the table sizing:

The best way to adjust the size of cells and tables is to click the edges of the cell that you want to adjust and drag to the appropriate size.

Alignment:



On the properties toolbar, there is a horizontal and vertical alignment that you can use to align text and images in a table cell.

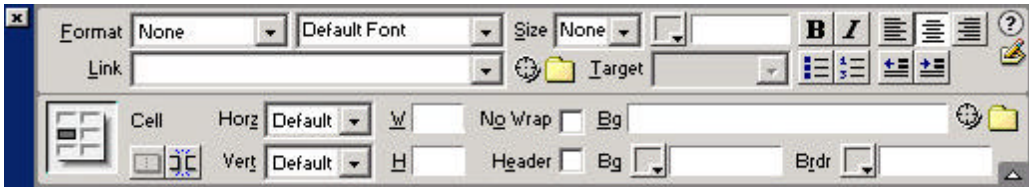
Working with Text

When adding text in Dreamweaver, you type as if you are in a word processor. There are several exceptions.

If you wish to move to the next line, you must press shift + enter or else it will jump down two lines, creating a new paragraph. Another way of doing this is going to the insert menu at the top of the screen and go to special characters, and this feature is also known as a line break.

Also, in order to space, you cannot use the space bar more than once in between words, so if you wish to have more than once space in between words, press control + shift + spacebar and you will get spaces. You can also find this feature in the insert special characters menu.

Adding styles such as bold, italics, and underlining is similar as it is in word. You use the Properties Inspector to perform several of these tasks.

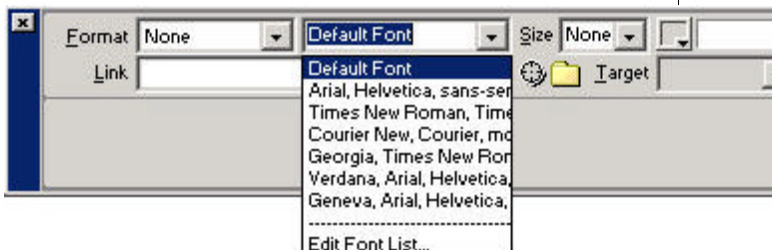
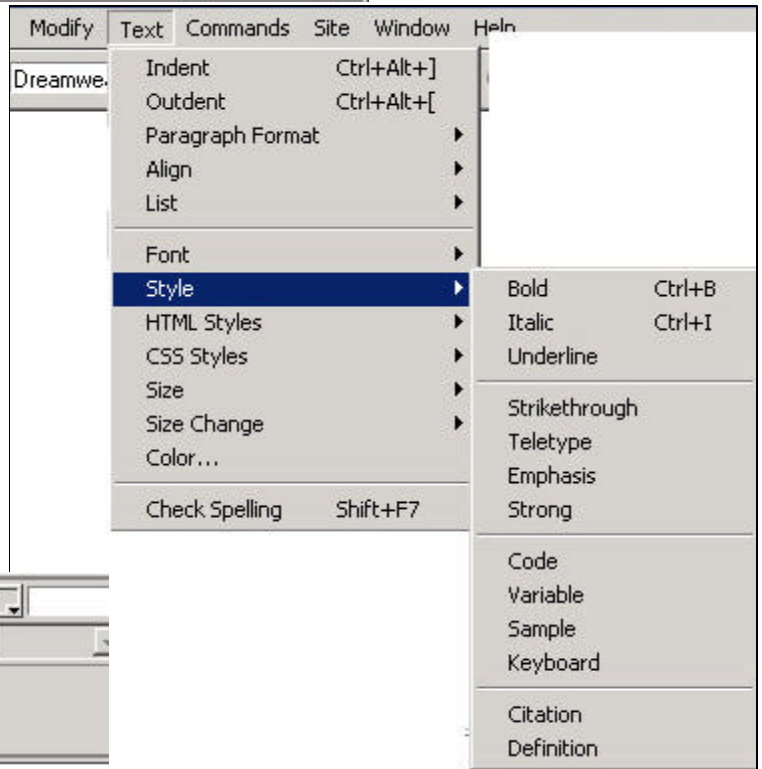


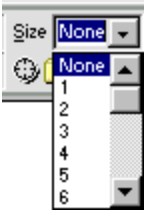
Some features that are not available on the properties inspector are available from the text menu located at the top of the screen.

Aligning Text: Text can be aligned in Dreamweaver similarly to how it is done in a word processor. You can click the align left, align center, or align right icon on the properties inspector.

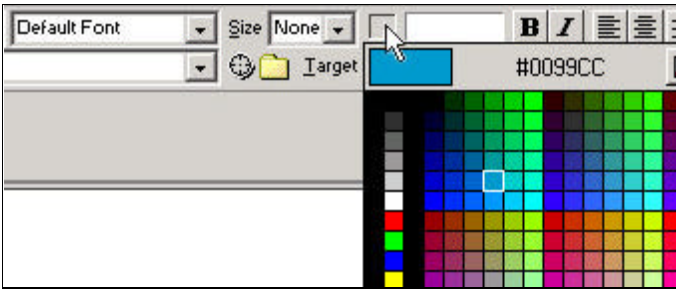
Fonts: In Dreamweaver fonts work a bit differently than in word. There are only several fonts available for use in web design, and these fonts are the most common fonts located on most users computers.

The fonts are listed in lists of 3, the first font being the preferred font. When the webpage is loaded on the client's computer, it will scan the computer for the available fonts, and choose the font in order the webpage designer selects it.





Font Size: Select a size or the default size will be selected. As you can see, these font sizes are not measured in points like they are in word processors.



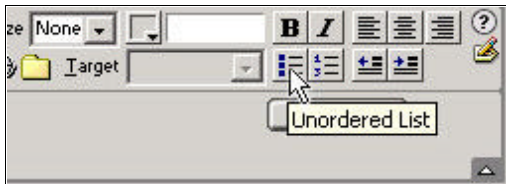
Font Color: You use the property inspector in order to change the color of the text. You just click the box next to the font size selector and then select one of the colors.

Indenting: From the properties button, click the text indent button to indent your text.



- Text
- Images
- Links
- Tables

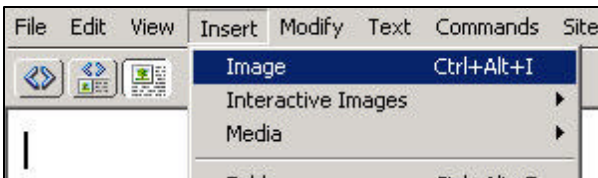
Lists: There are two types of lists. Ordered Lists (numbered lists) and unordered lists (bulleted lists). In order to create lists, you can either use the text menu at the top of the screen or use the properties inspector. On the properties inspector, click the picture



Working with Images

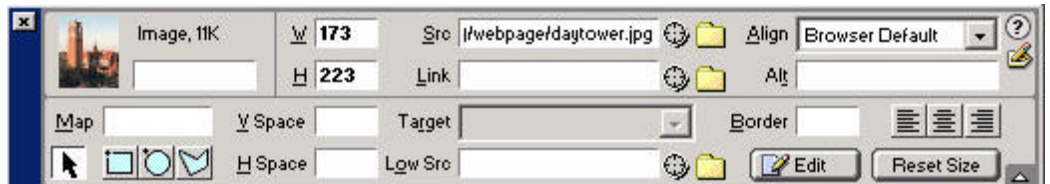
Inserting Images

Go to insert image, and then browse through your web folder to find the image that you would like to insert into the document.

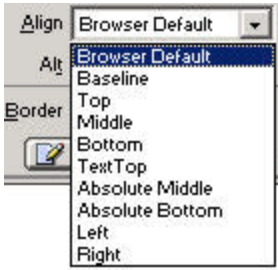


Properties Inspector with Images

When you have the image selected in Dreamweaver, the property inspector changes several of its options. It shows the image source (src) and allows you to link the image to another webpage,



which will be discussed later on. You can place a border around any image by inserting a number in the border field. "1" is the thinnest border, and you may increase the number until you reach a border thickness that is desired.



Another feature is the **Align tool**. With this, it allows you to align text next to images. You select where you want the text to show up with respect to the image. The most common ones used are baseline, top, middle, and bottom.

Generally, this feature does not work that well, especially since different users have different screen sizes, so the best workaround is to use tables.

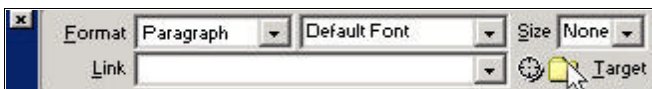
Links

In order to link your webpage to another, you must have the web address of the other webpage, or the page must be another page that you have created that is in your web folder.

To link, you are going to use the properties inspector.



On the left, you will see the files located on the web server. You will need to drag the files from you folder located on the right into the appropriate folder on the web server.

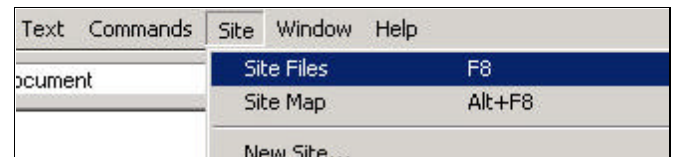


Or if you are linking to another page that you have created, click the folder to the right and select the page once the browse window appears.

Uploading your files onto the Web

Once your website is ready to be put into production, we need to upload the files onto a web server. In order to do this, go to site, and then to site files. (In order for this step to work, you must have defined your site as discussed earlier)

On the right, you will see the following screen, which consists of the files located on your hard drive.



Local Folder	Notes	Size	Type	Modified
W:\Dreamweaver Webpage			Folder	2/12/2002 10:55
Graphics			Folder	2/21/2002 11:30
Go Back.htm		1KB	Netscape...	2/21/2002 11:33
Index.htm		5KB	Netscape...	2/21/2002 11:32

First, you need to highlight the text that you would like to link, or select the picture that you would like to link to another webpage and then, type the address of the page that you want to link too, including the http://

