

Table of Contents

- Overview
- Inserting a Style Sheet
- Defining your Styles using a custom style
 - Type
 - Adding a new style to an existing style sheet
 - Block
 - Background
 - Lists
 - Extensions
- Redefining HTML Tags
- Other Features
 - Removing the underlining from Links
 - Hover Effect on Links (Use CSS Selector)

Evan Hochman
HSC IT Center
ehochman@vpha.health.ufl.edu

Overview

Cascading style sheets have many different uses in web design. Web designers are able to create different styles for different purposes. For instance, you could create a style that defines the body text to be Verdana, 10 point. Later on, you may easily change the body text back to Times New Roman, 12 point. Instead of having to change the font on each page of your website, all you need to do is redefine the style on the style sheet, and it will instantly change on all of the pages that the style sheet has been applied too. There are several ways to define a style using Dreamweaver--you can either define a custom style or redefine the pre-defined tags such as the Heading 1 tag, Heading 2 tag, etc.

Inserting a style sheet

A style sheet is the main file where all of the styles will reside. You will have multiple styles defined within ONE style sheet.

First, a style sheet needs to be created, and then attached to each web page. It is important that this style sheet is attached to each page, or else it will not function. To insert a style sheet, open up the design palette in Dreamweaver. Make sure the design tab on the right of the screen is opened up. Once we have defined styles, they will appear in the Design palette.

After you have the Design window open, look at the bottom right hand corner of the palette, and this is where you will proceed to attach a style sheet to your webpage.

Click the second button from the left to insert your style sheet. A window, as shown in *Figure 2* will pop up. This is where you will define your first style. Call the first style 'Body' (for the body text). Leave the selection on make custom style. Because we haven't created a style sheet file that will consist of all the styles, we want to define a new style sheet file.

Click ok, and a window (*Figure 3*) should open up asking you where you would like to save the style sheet. You can just call the file style or whatever you want. Just remember, that all of your styles are going to reside within this one style sheet file.

After you complete this step, you are ready to begin defining styles in the style sheet.

Figure 1

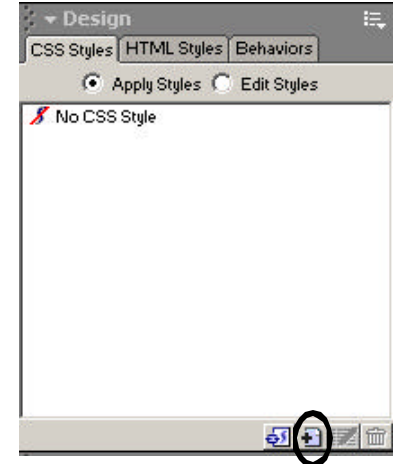


Figure 2

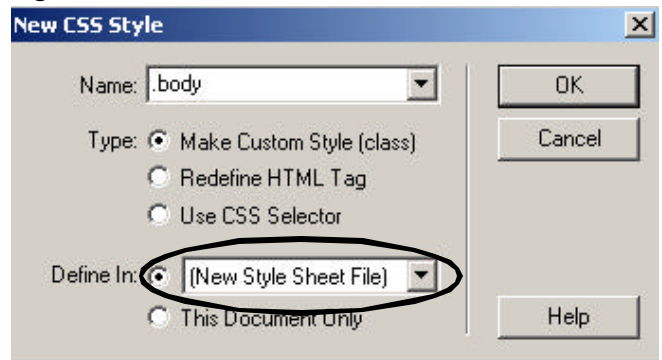
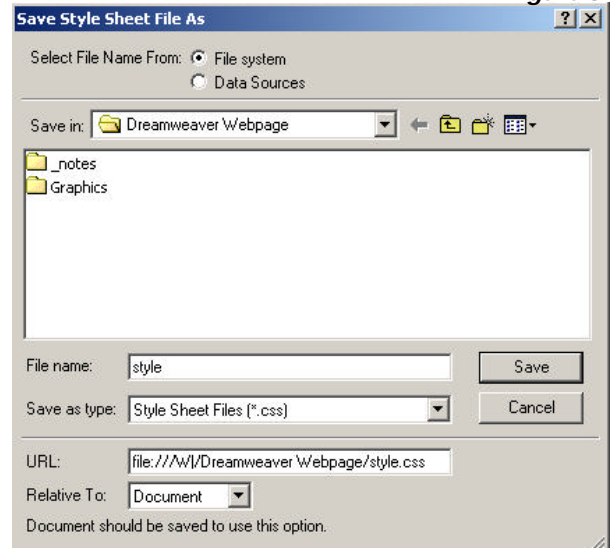


Figure 3



Defining your Styles using a Custom Style [Make Custom Style (Class)]

Type

Figure 4 is the screen that will appear after you create a name for your style sheet.

Start by defining what we want our body text to look like.

You may select a font, font size, style, weight, case, and color of the font, along with several other options.

Take note of the category field located on the left. At this point we are just defining styles for the text.

Click ok once you are finished defining this style.

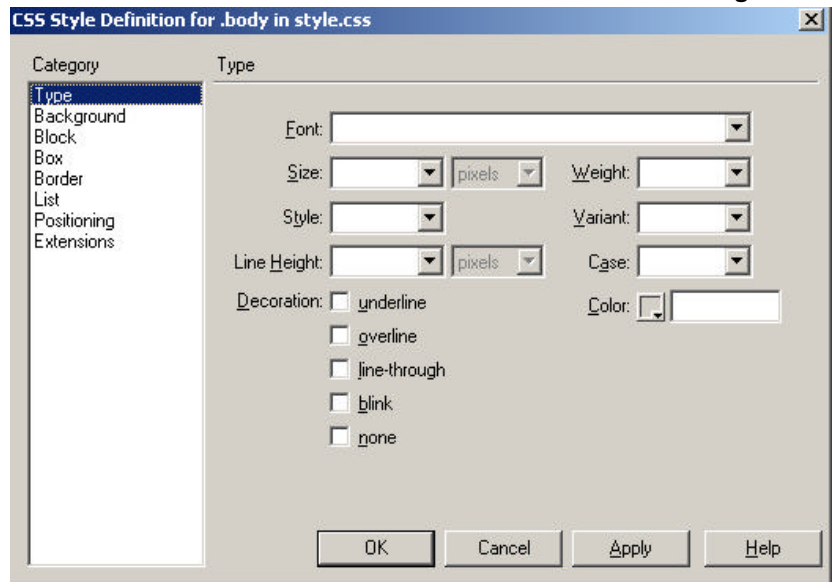


Figure 4

Adding a new style to an existing style sheet

To add another style to an existing style sheet, make sure that you have the "CSS Styles" Window open, and click the second icon on the bottom as shown in Figure 5. It will ask you to name your new style. Make sure you leave the period in front of the name.

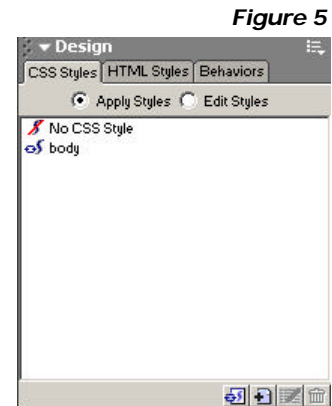


Figure 5

Block

Select block on from the list of categories (Figure 6) to see options that will allow you to align text. The asterisks indicate that the effects will not appear in dreamweaver, so you will need to preview the page in a browser to see what it looks like. It is also important to realize that Netscape and Internet Explorer do not always support the same features that could be included in a cascading style sheet.

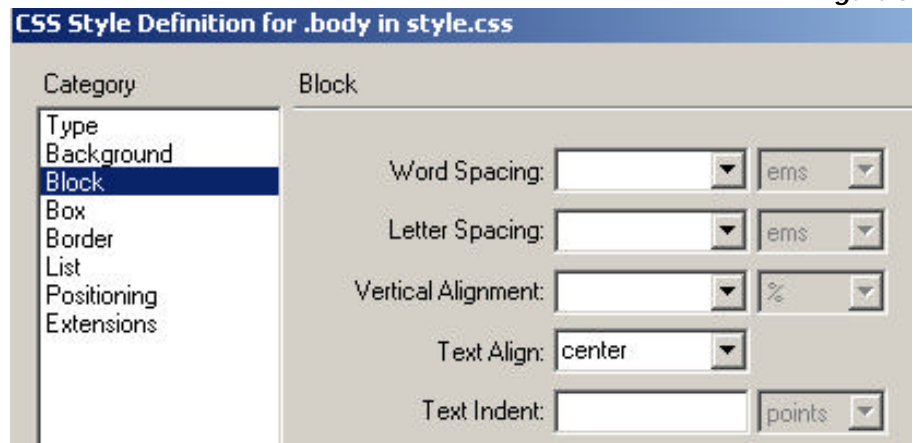


Figure 6

Background

The background function is used for background behind text. Take a look at the example shown below. This could be used as a heading/ title of a paragraph.

Figure 7



To do this, it is best to create a single-celled table. Then you need to add a new style and choose a background color for the background of the cell in the table, and then choose the font and font color that you would like to use. If later on, you decide you want to change the background color of that cell and/or the font, you can edit the style.

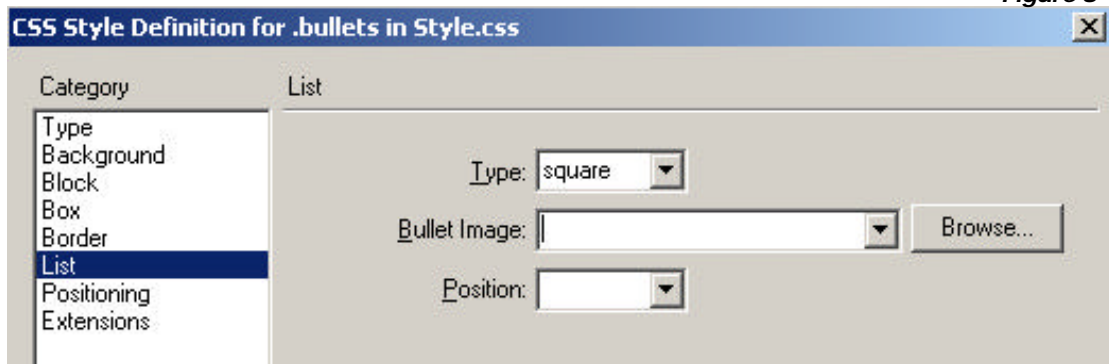


Lists

With the lists function, you can define what a bulleted list looks like. You can choose the type of bullets that you would like to use, or even choose a graphic as your bullet. In the style menu, open up the List category as shown in *Figure 8*, and then select the type of bullet you want or the graphic that you'd like to use for your bullet. It is a good idea to use a separate style for bullets because if you want to have a numbered list somewhere else on your website, this bullet function will automatically change the numbered lists to an unordered, bulleted list. The workaround is to create a separate style and use it only for bulleted (unordered) lists.

NOTE: You will not be able to see the different types of bullets in Netscape 4.79 or lower. If you are using Netscape 6 or higher, it should work.

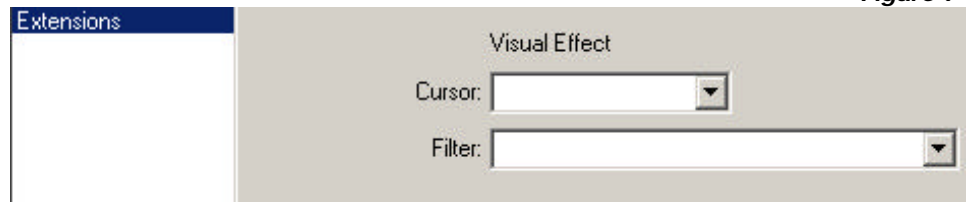
Figure 8



Extensions

The extensions feature allows you to change the appearance of the cursor when it moves over a certain block of text, as long as it is defined by the style. As you may already be aware of, when you bring the mouse over a link in a browser, it becomes a hand. You can tell the browser to create a certain type of mouse icon if you bring it over normal body text.

Figure 9



To do this, adjust the body text to your liking, and then go down to extensions as shown in *Figure 9* and select the cursor type that you would like to use.

Redefining HTML Tags

Redefining HTML tags is another way to use styles. If you would prefer to assign a block a text a header such as h1, then you can do this by redefining HTML tags.

In order to do this, click add new style to your style sheet as we did before, but this time, click the radio button that says "Redefine HTML Tag," (Figure 10) and you will see that above it a dropdown menu will be displayed, showing all of the tags that you can define styles for.

Once you have selected the tag that you would like to redefine, click ok, and the same window (Figure 12) that you used making custom styles should appear. Go ahead and choose the styles that you wish for this tag to define.

Once you have them defined, inserting them into the page is a little different than with the custom styles. This way, you just have to select the tag listed on the properties inspector (Figure 11) and apply it to your document.

Figure 10

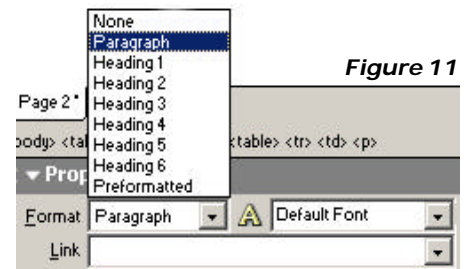
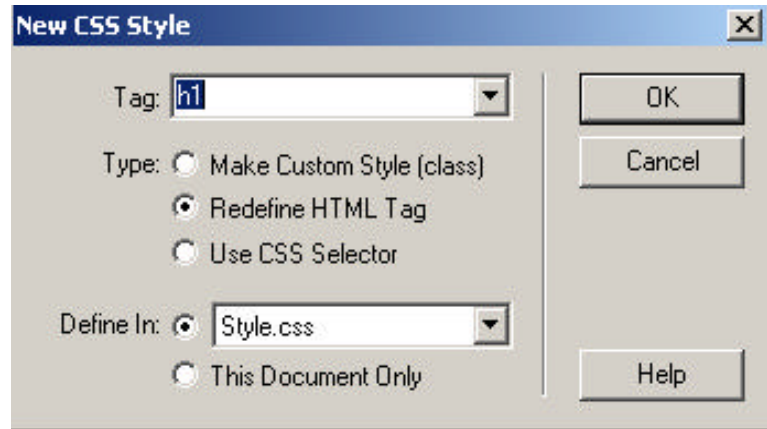
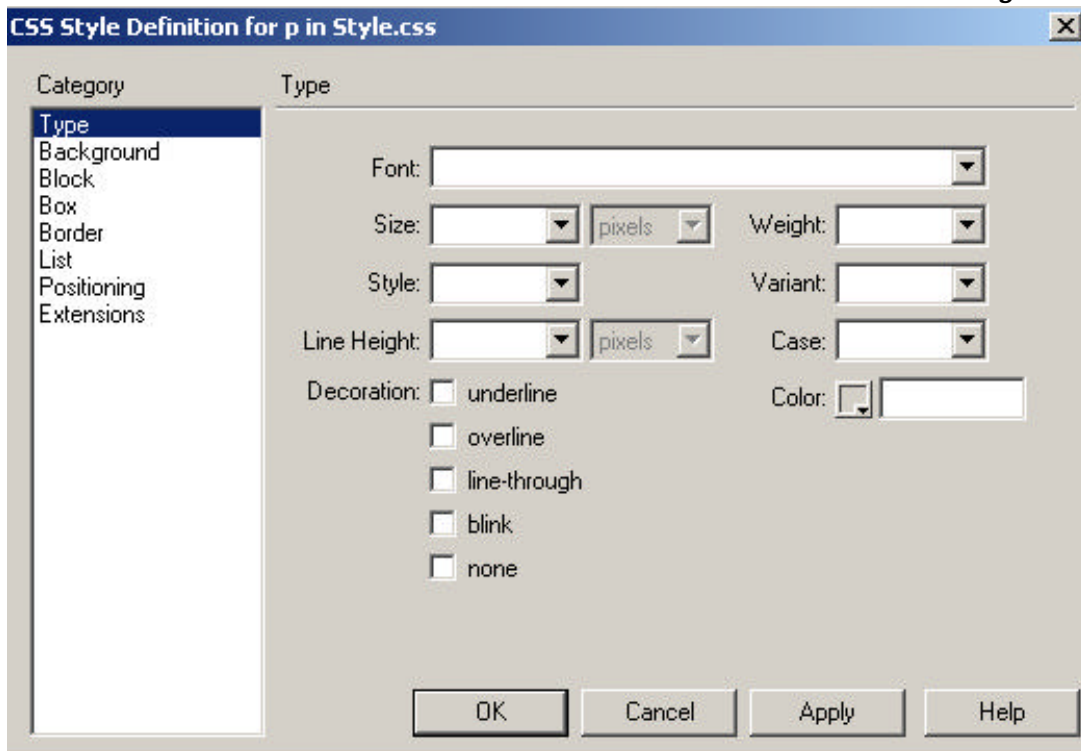


Figure 11

Figure 12



Other Features

Removing the underlining from links

In order to remove the underlining from a link, define a rule for the link tag, 'a' as shown in *Figure 13*.

Click ok, and now you want to define what the text is going to look like. Links have an automatic style of underline, so in order to remove this, you want to check off 'none' under the styles as shown in *Figure 14*. You also need to select the font style and size of the text that the links to appear as.

Lastly, the style needs to be applied to the link.

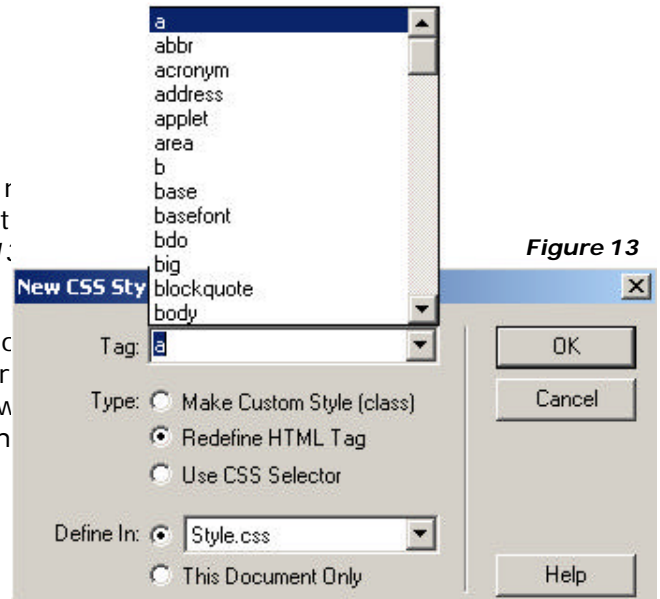


Figure 13

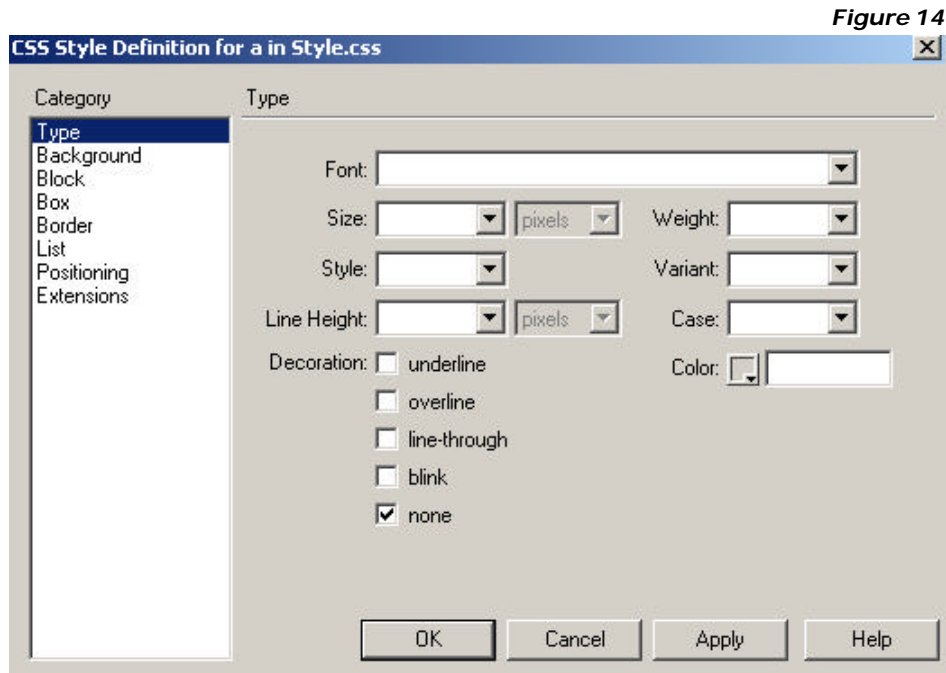


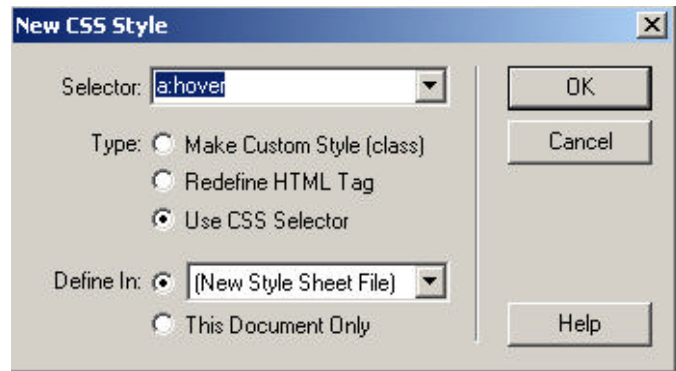
Figure 14

Hover Effect on Links (Use CSS Selector)

Figure 15

If you would like to create the hover effect on a link, you can do this by using cascading style sheets. To do this, add a new style to your style sheet.

Instead of creating a custom style or defining a header, you will use the CSS Selector. Check that option as shown in *Figure 15*. Now, you will see a dropdown menu appear that is titled selector. Change that to 'a:hover,' and then click ok.



After you click ok, it will bring you into the same screen before that we were using to define style sheets. Select the font you would like to see when the mouse rolls over a link and the color if you would like to see a different color when the mouse rolls over the link. Refer to *Figure 16*.

Figure 16

